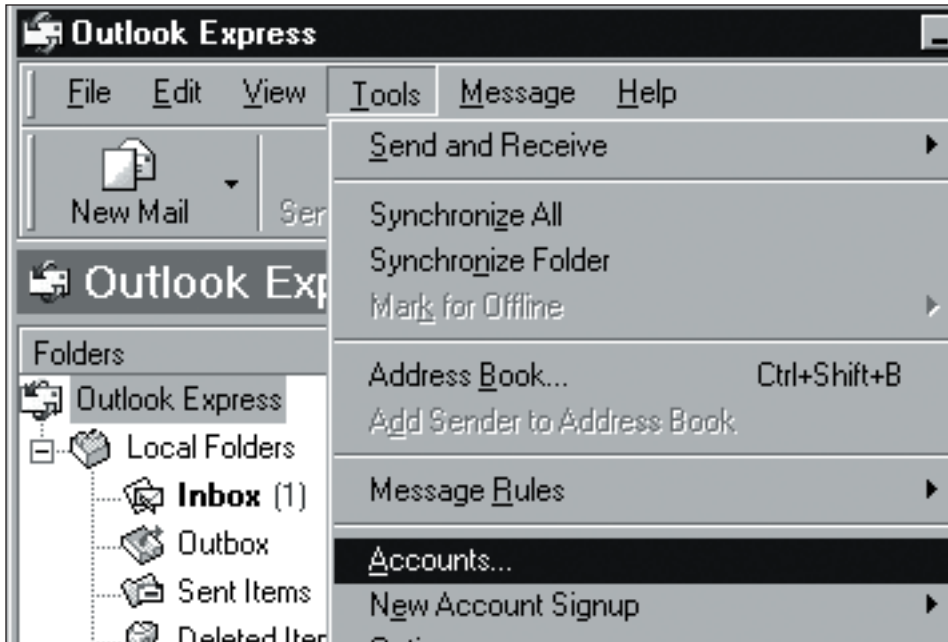


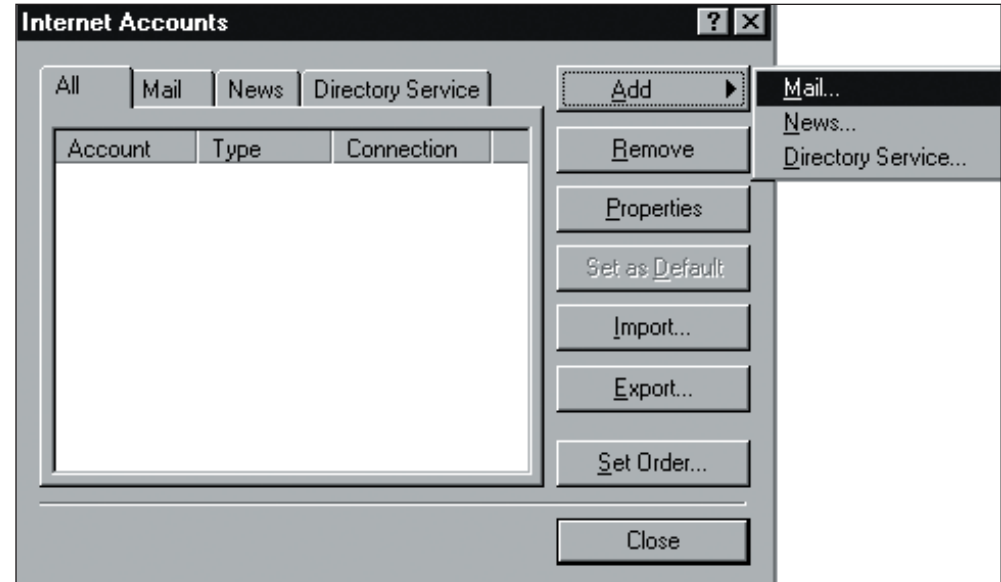
Setting Up Outlook Express®

POP EMAIL ACCOUNT SETUP

1. Open Outlook Express and select **Tools** -> **Accounts**.



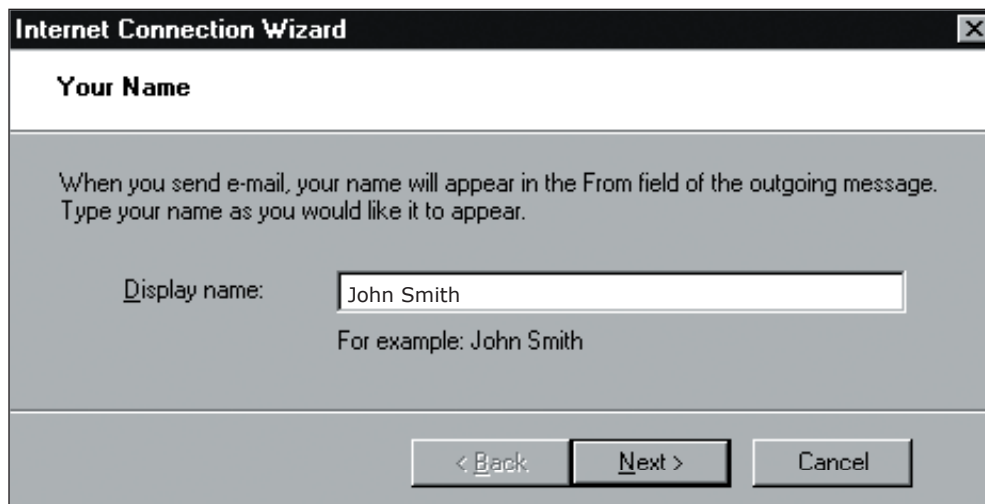
2. Select **Add** -> **Mail**.



Setting Up Outlook Express®

POP EMAIL ACCOUNT SETUP (cont.)

3. Type your name as you want it to appear on outgoing messages and then click **Next**.



Internet Connection Wizard

Your Name

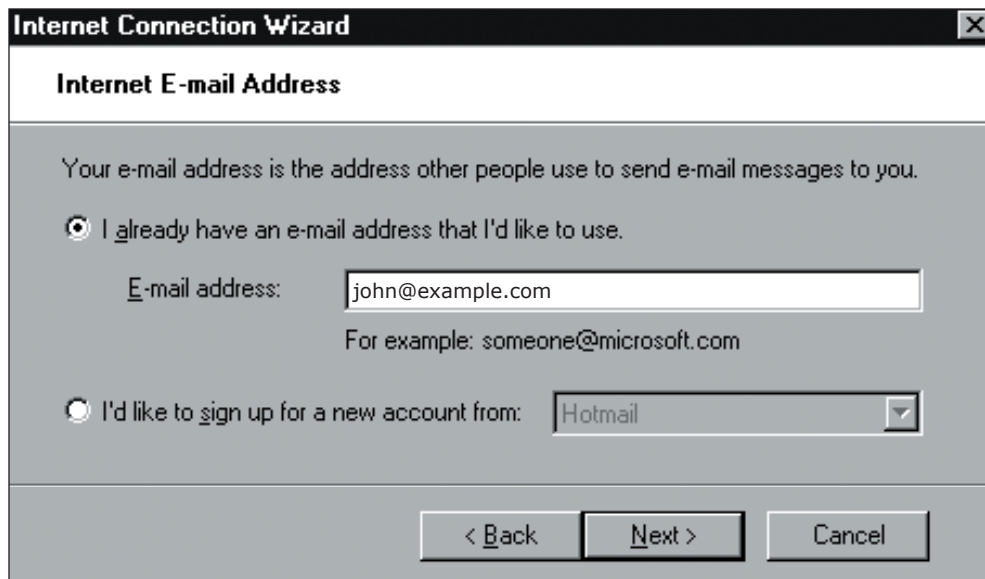
When you send e-mail, your name will appear in the From field of the outgoing message. Type your name as you would like it to appear.

Display name:

For example: John Smith

< Back Next > Cancel

4. Type your email address and then click **Next**.



Internet Connection Wizard

Internet E-mail Address

Your e-mail address is the address other people use to send e-mail messages to you.

I already have an e-mail address that I'd like to use.

E-mail address:

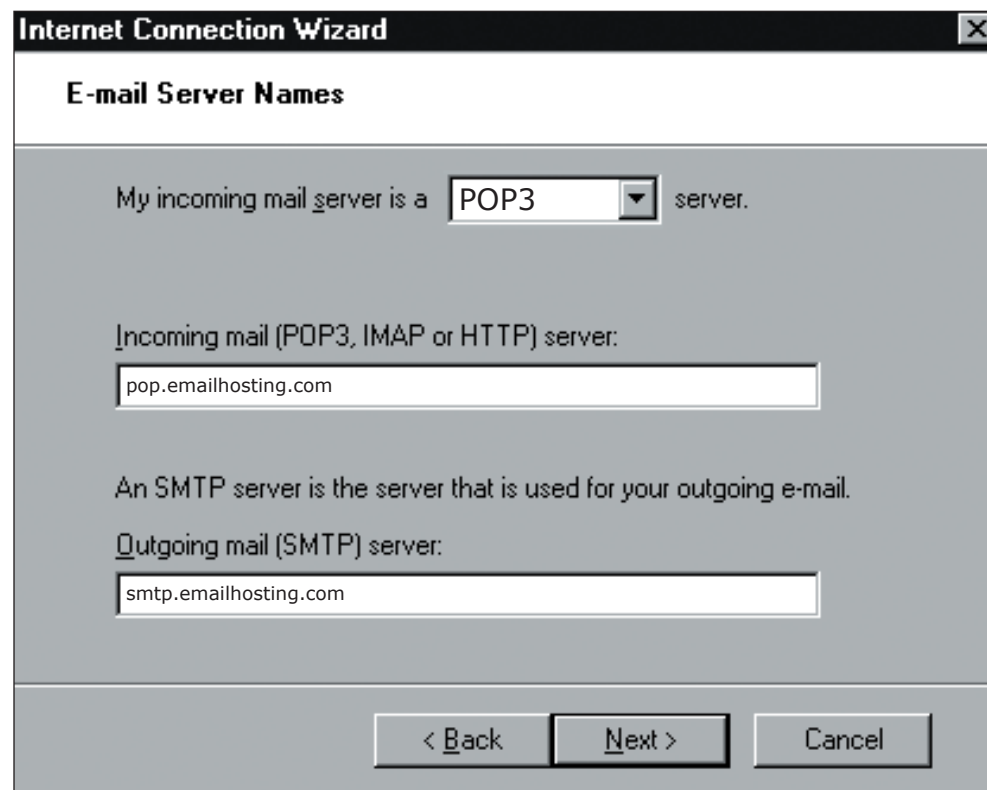
For example: someone@microsoft.com

I'd like to sign up for a new account from:

< Back Next > Cancel

5. Enter Emailhosting's server information.

- My incoming mail server is a **POP3** server.
- **Incoming mail server (POP3, IMAP OR HTTP):** pop.emailhosting.com
- **Outgoing mail (SMTP) server:** smtp.emailhosting.com
- Click **Next**.



Internet Connection Wizard

E-mail Server Names

My incoming mail server is a server.

Incoming mail (POP3, IMAP or HTTP) server:

An SMTP server is the server that is used for your outgoing e-mail.

Outgoing mail (SMTP) server:

< Back Next > Cancel

Setting Up Outlook Express®

POP EMAIL ACCOUNT SETUP (cont.)

6. Enter your Emailhosting username where you are prompted to enter your account name.
 - Enter your Emailhosting password below where you entered your username.
 - Be sure to leave “**Log on using Secure Password Authentication**” unchecked.
 - Click **Next**.

Internet Connection Wizard

Internet Mail Logon

Type the account name and password your Internet service provider has given you.

Account name:

Password:

Remember password

If your Internet service provider requires you to use Secure Password Authentication (SPA) to access your mail account, select the 'Log On Using Secure Password Authentication (SPA)' check box.

Log on using Secure Password Authentication (SPA)

< Back Next > Cancel

7. You will be returned to the **Internet Accounts** window.
 - Select your Emailhosting account and then click on the **Properties** button.

Internet Accounts

All Mail News Directory Service

Account	Type	Connection
pop.emailhosting.com	mail (default)	Any Available

Add

Remove

Properties

Set as Default

Import...

Export...

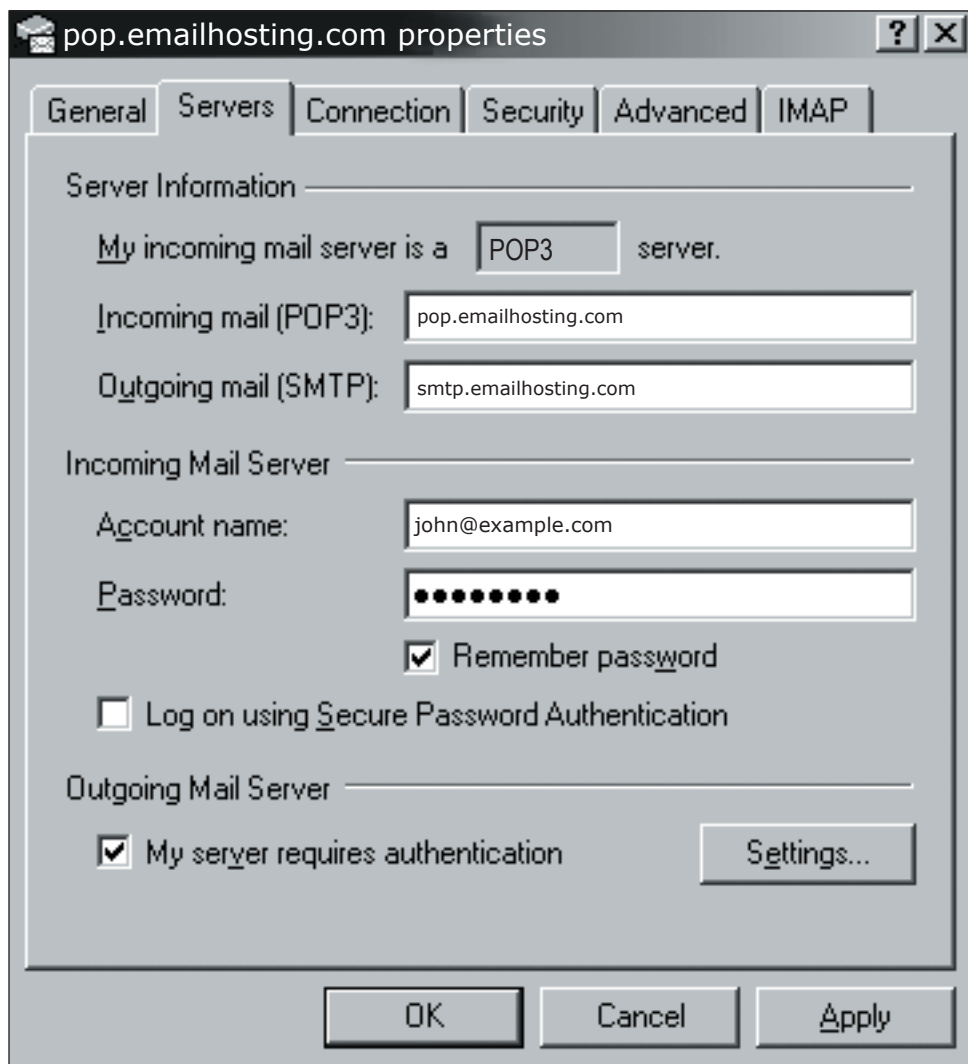
Set Order...

Close

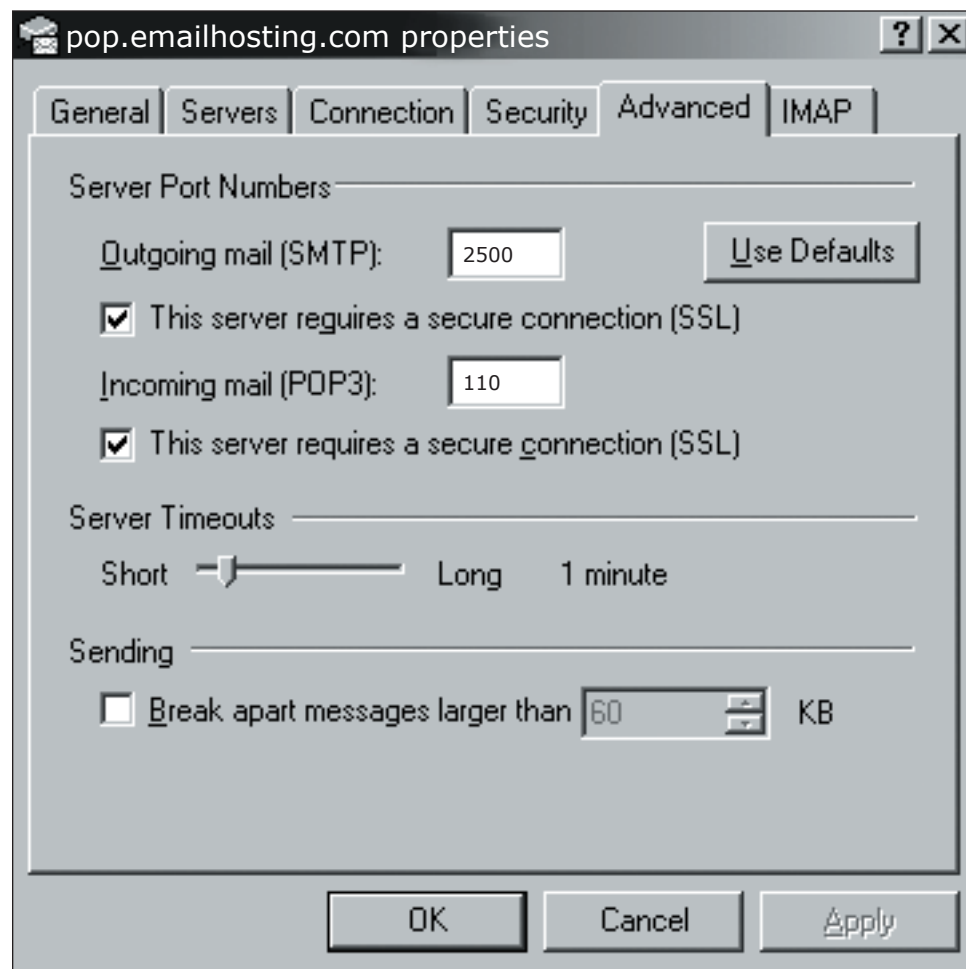
Setting Up Outlook Express®

POP EMAIL ACCOUNT SETUP (cont.)


- Click on the **Servers** tab.
 - Check “**My server requires authentication**”.
- Click on the **Advanced** tab.
 - Change the **Outgoing mail (SMTP)** to **2500** instead of 25.



The screenshot shows the 'pop.emailhosting.com properties' dialog box with the 'Servers' tab selected. The 'Server Information' section shows 'My incoming mail server is a POP3 server.' with 'pop.emailhosting.com' in the 'Incoming mail (POP3):' field and 'smtp.emailhosting.com' in the 'Outgoing mail (SMTP):' field. The 'Incoming Mail Server' section has 'Account name: john@example.com' and a masked password field with 'Remember password' checked. The 'Outgoing Mail Server' section has 'My server requires authentication' checked. Buttons for 'OK', 'Cancel', 'Apply', and 'Settings...' are visible.



The screenshot shows the 'pop.emailhosting.com properties' dialog box with the 'Advanced' tab selected. The 'Server Port Numbers' section has 'Outgoing mail (SMTP):' set to '2500' and 'Incoming mail (POP3):' set to '110'. Both 'This server requires a secure connection (SSL)' checkboxes are checked. The 'Server Timeouts' section has a slider set to '1 minute'. The 'Sending' section has 'Break apart messages larger than' set to '60' KB. Buttons for 'OK', 'Cancel', and 'Apply' are visible.

- Your account is now setup.
 - Click **OK** and then close the **Internet Accounts** page. 

NOTE: As a courtesy, we provide information about how to use certain third-party products but we do not endorse or directly support third-party products, and we are not responsible for the functions or reliability of such products. Outlook Express® is a registered trademark of Microsoft Corporation in the United States and/or other countries. All rights reserved.